



**Western Cape
Government**

Department of the Premier

Expenditure on the poor



Concurrent areas with National Government:

Education
(excluding tertiary education)



Concurrent areas with National & Municipal Government

Health services
Provision of Housing
Public Transport
Urban and rural development



Exclusive Provincial competence

Oversight over the SAPS and city police services
Provincial roads and traffic
Ambulance services
Provincial sport
Provincial sport
Libraries other than national libraries
Museums other than national museums
Provincial recreation and amenities



CITY OF CAPE TOWN | ISIDEKO SASEMAPA | STAD KAAPSTAD

THIS CITY WORKS FOR YOU

Concurrent areas with National and Provincial Government

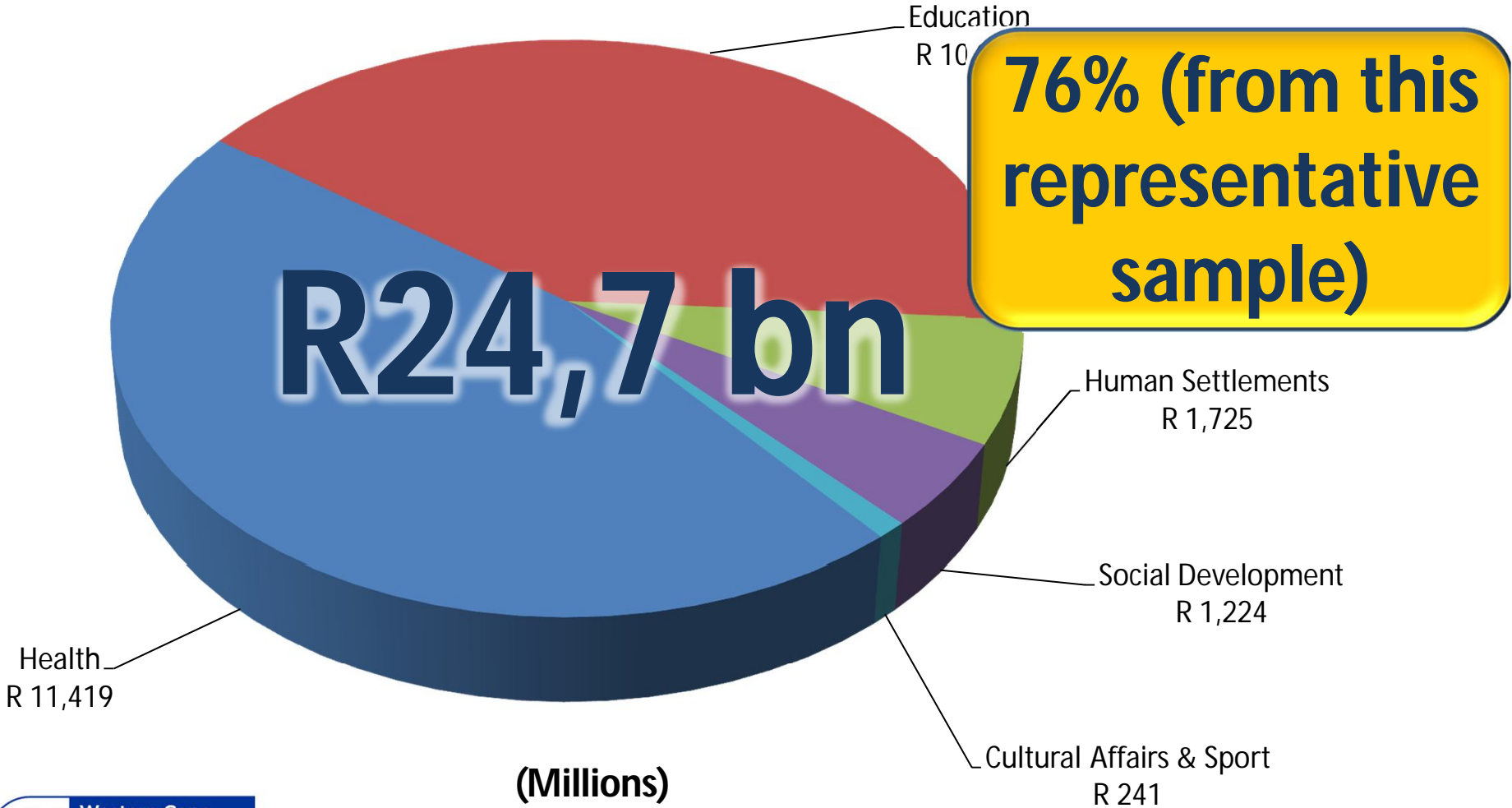
Health services
Provision of Housing
Public Transport
Urban and rural development

Exclusive Municipal competence

Rates Collection
City police services
Sanitation services
Water
Street Lighting
Municipal roads
Electricity (in areas not serviced by Eskom)
Firefighting services



Consolidated Western Cape Investment



Representative sample of departments servicing poorer communities

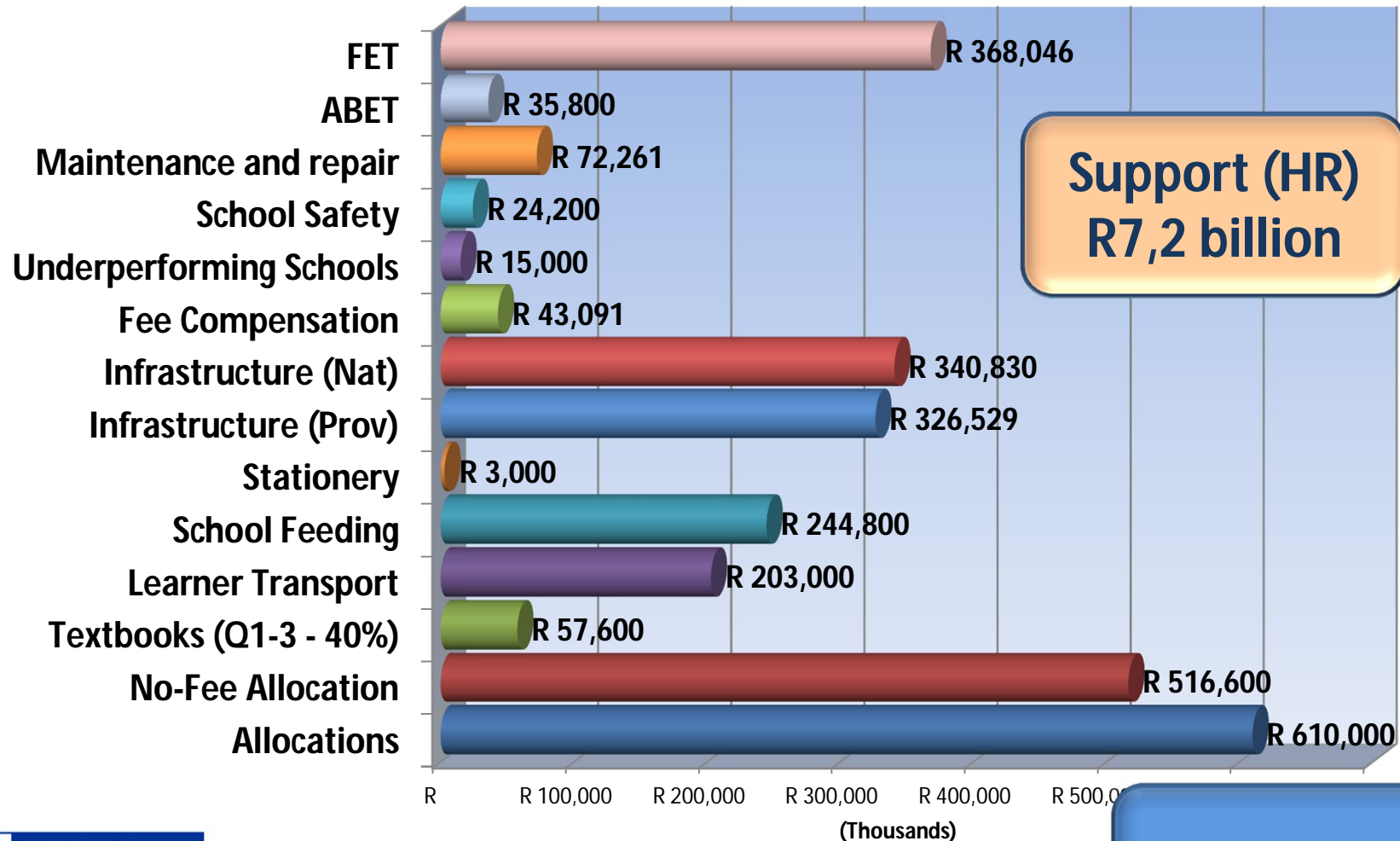


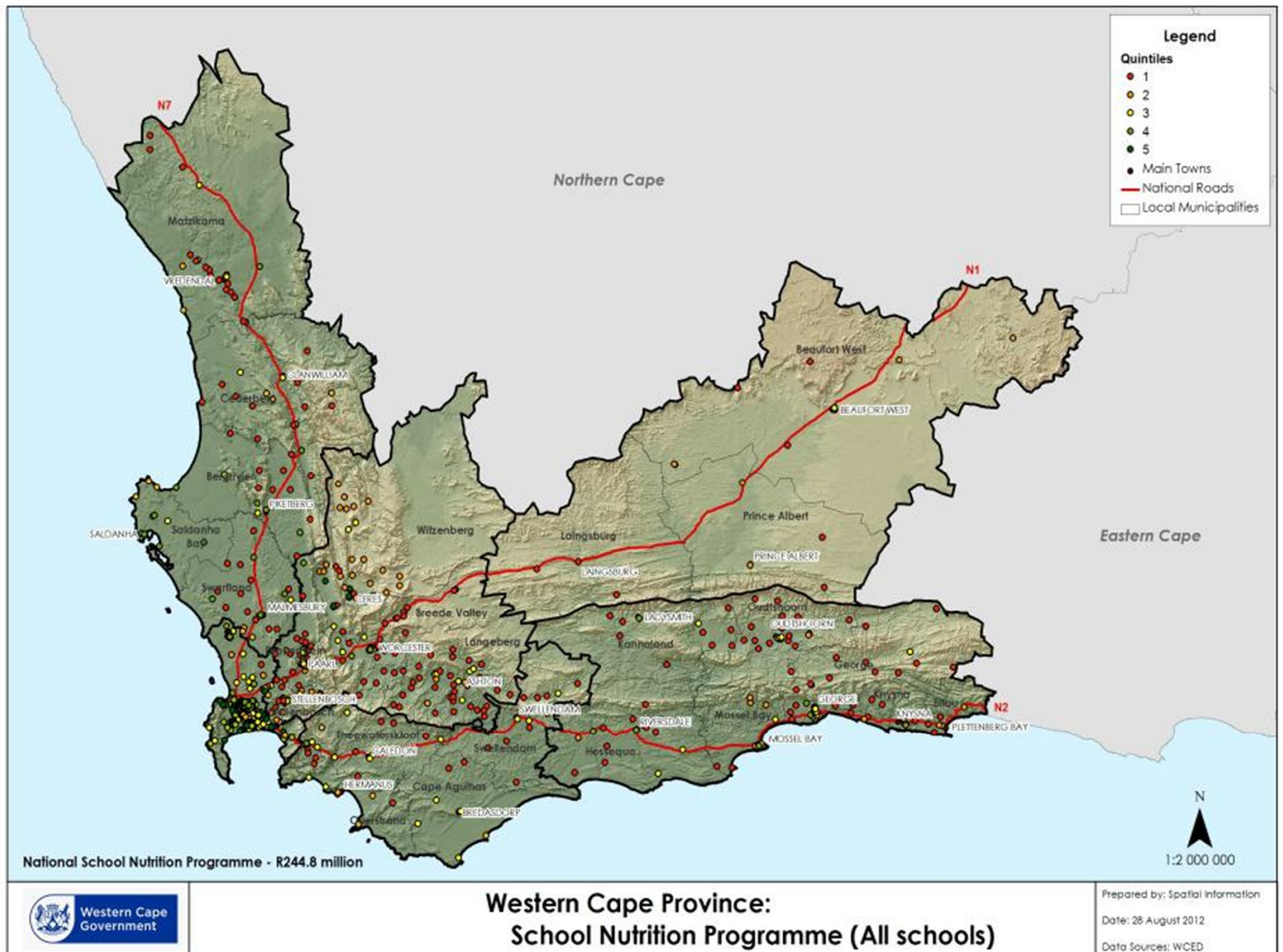
**Western Cape
Government**

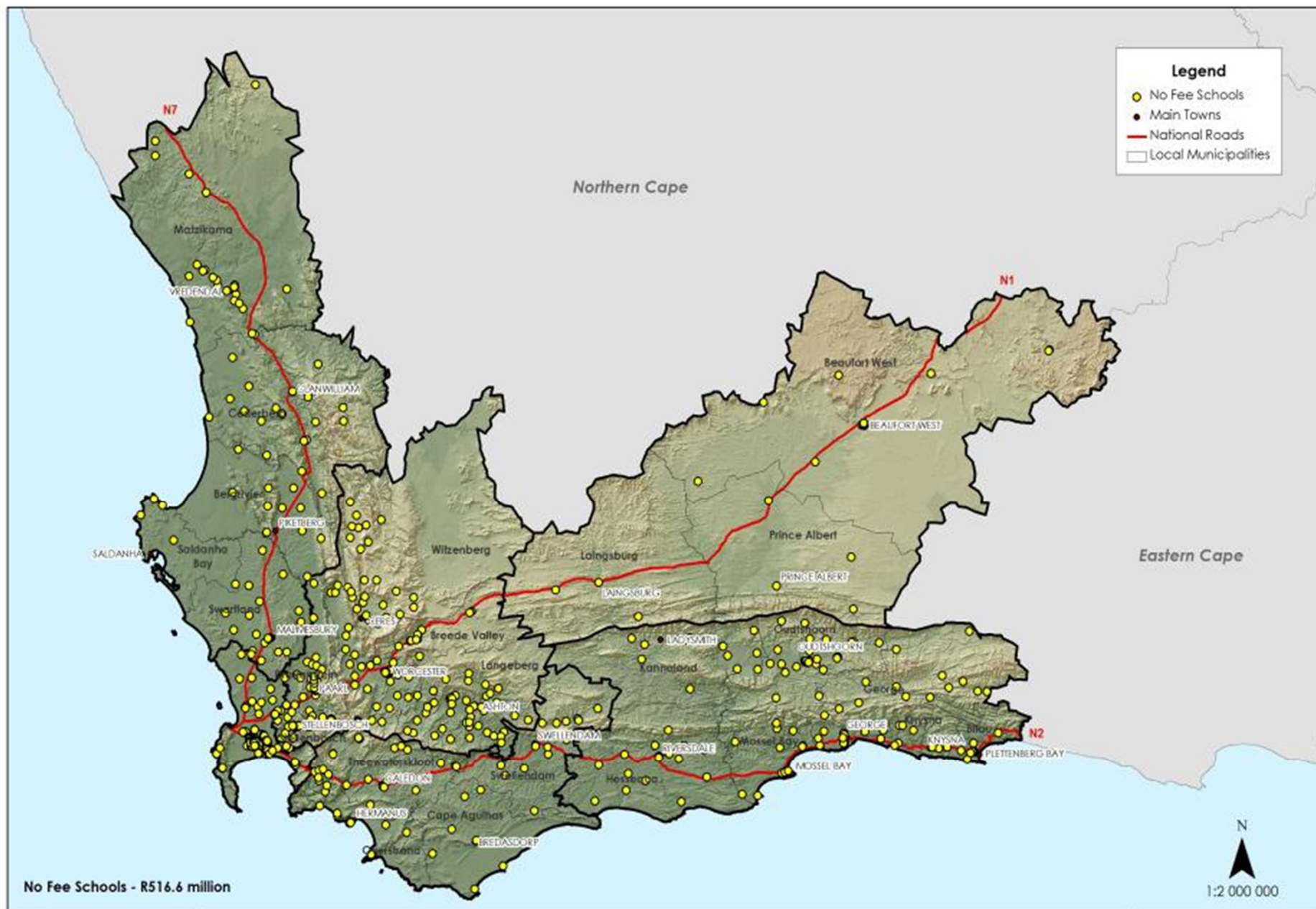
Department of the Premier

Education

Education Investment







Western Cape Province: No Fee Schools

Prepared by: Spatial Information

Date: 28 August 2012

Data Sources: WCED

Education Achievements in poor areas

- Poorest schools in National Quintile 1 improved their NSC examination pass rate 57% in 2010 to 70% in 2011
- Pass rate across schools in the poorest three National Quintiles increased >70% in the 2011 NSC examinations
- # Underperforming schools have been reduced from 85 in 2009 to 78 in 2010 to 30 in 2011
- # Underperforming public high schools has dropped by more than 60% 78 in 2010 to 30 in 2011
- **Khayelitsha:** Since 2009, the average pass rate increased by 13.5% and the number of learners passing increased by 24.9%.
- 44.8% increase in the number of Bachelor passes.
- Of 15 underperforming schools in Khayelitsha two years ago, there are now only six – a decrease of 60%.

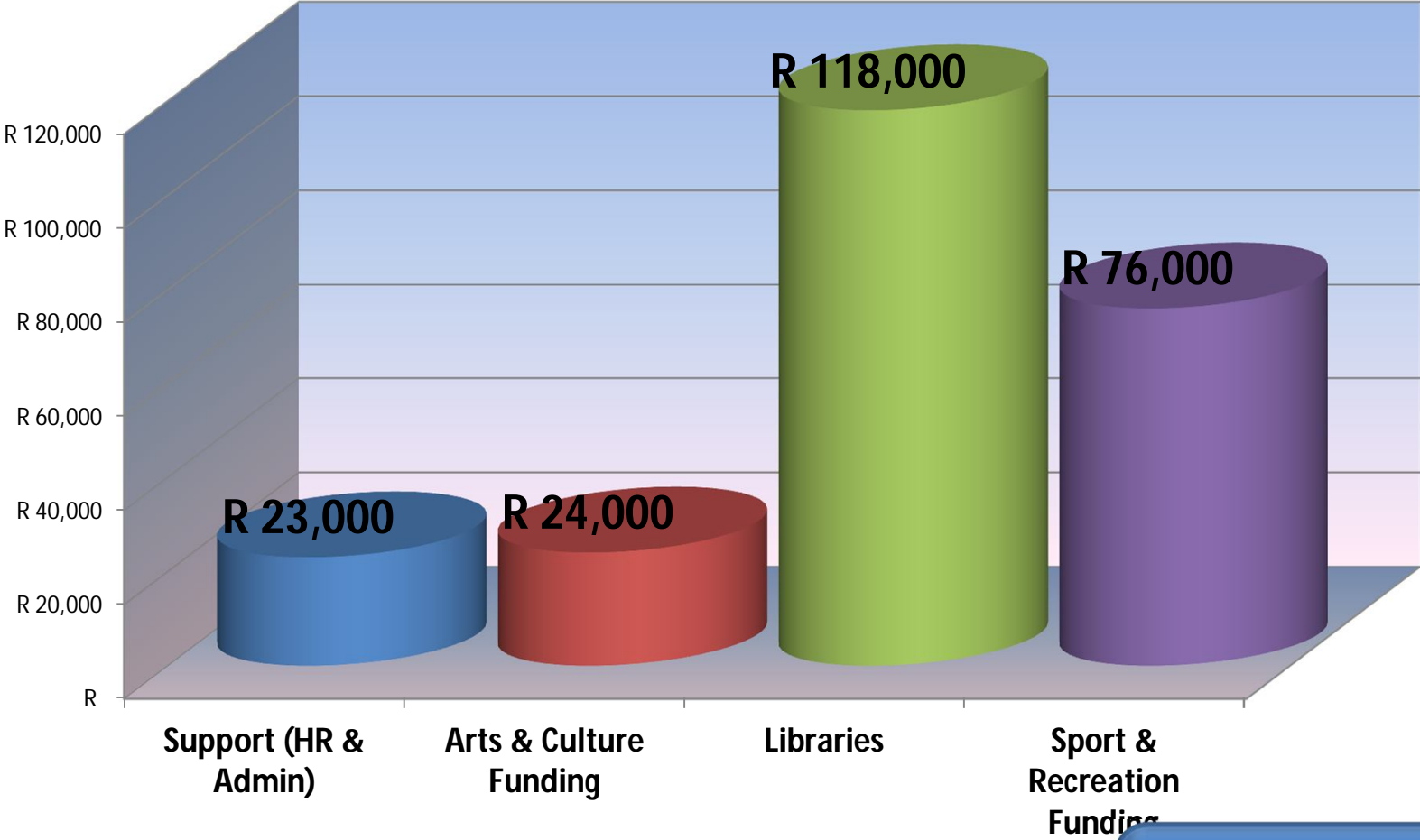


Western Cape Government

Department of the Premier

Cultural Affairs & Sport

Cultural Affairs & Sport Investment

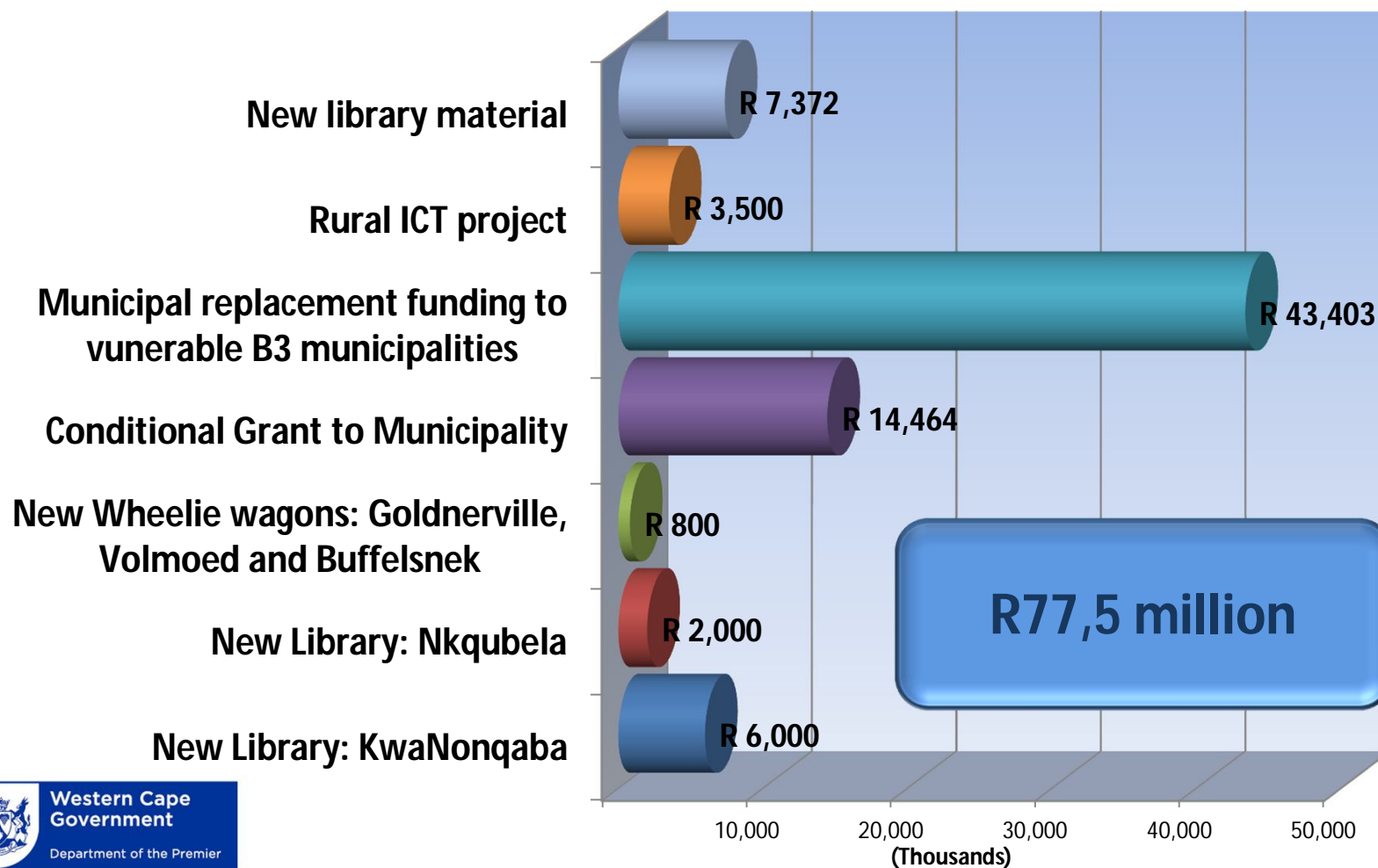


61% of Western Cape Budget

R241 million

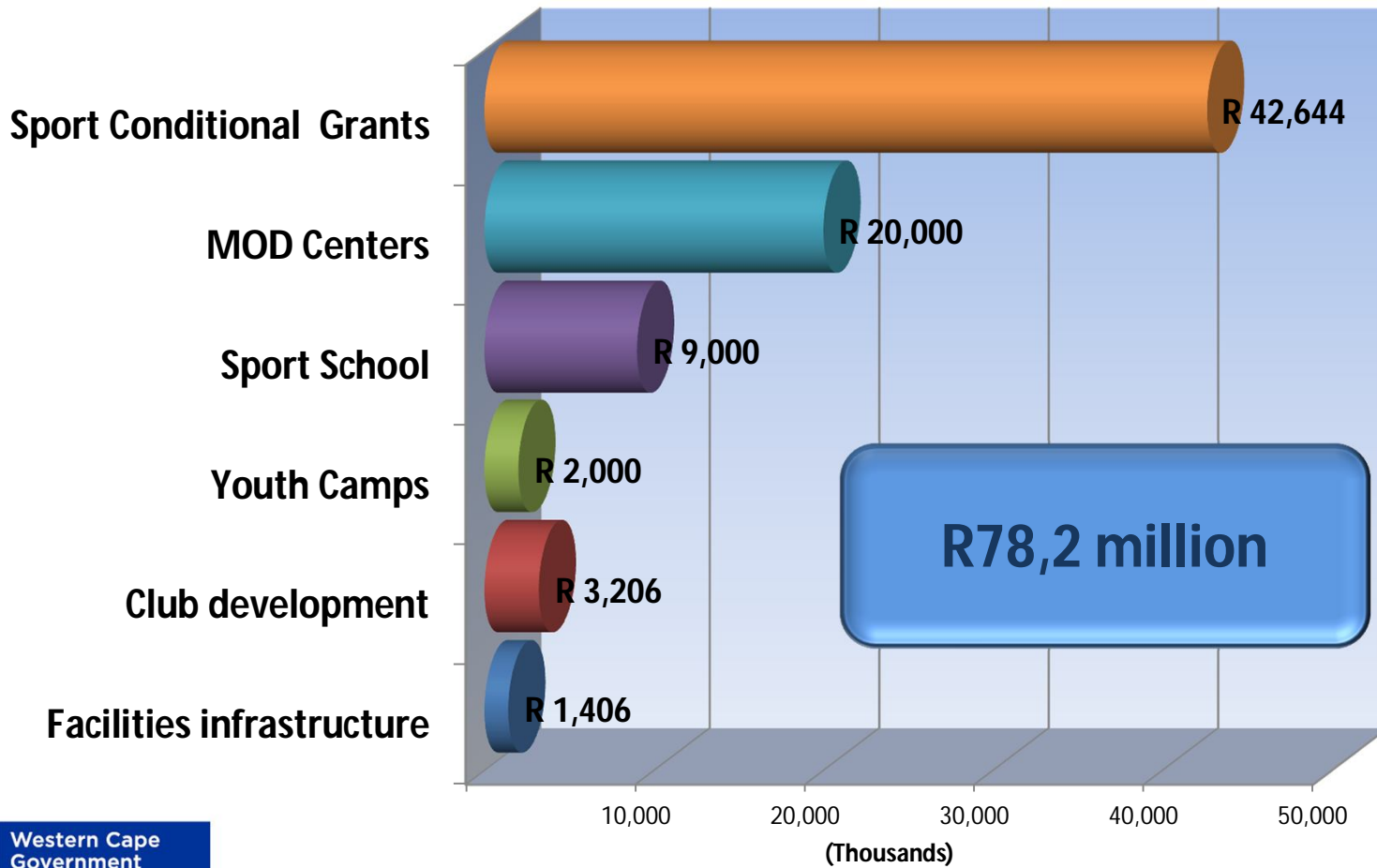
Library Investment

Investment in Libraries



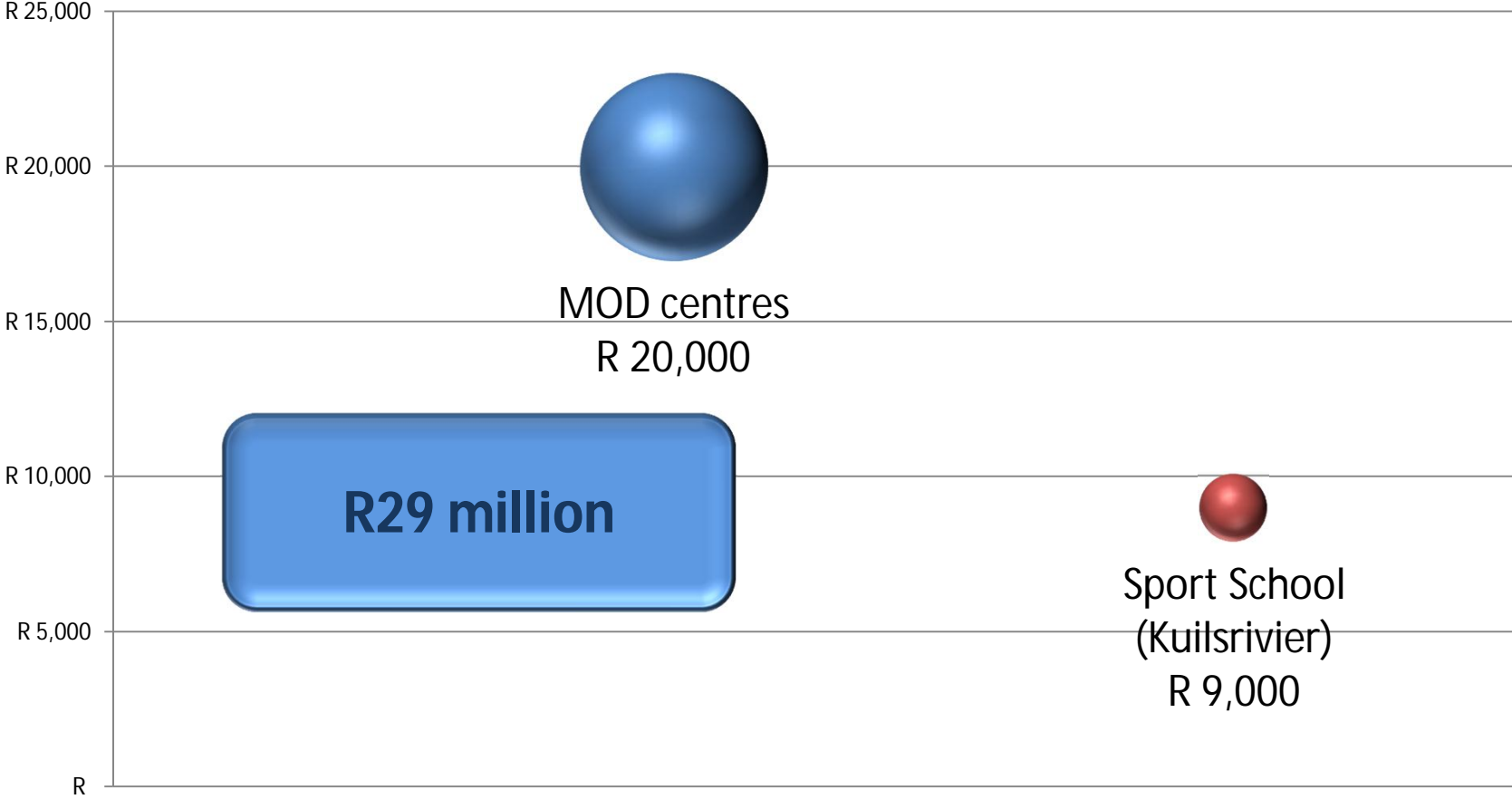
Sport & Recreation Investment

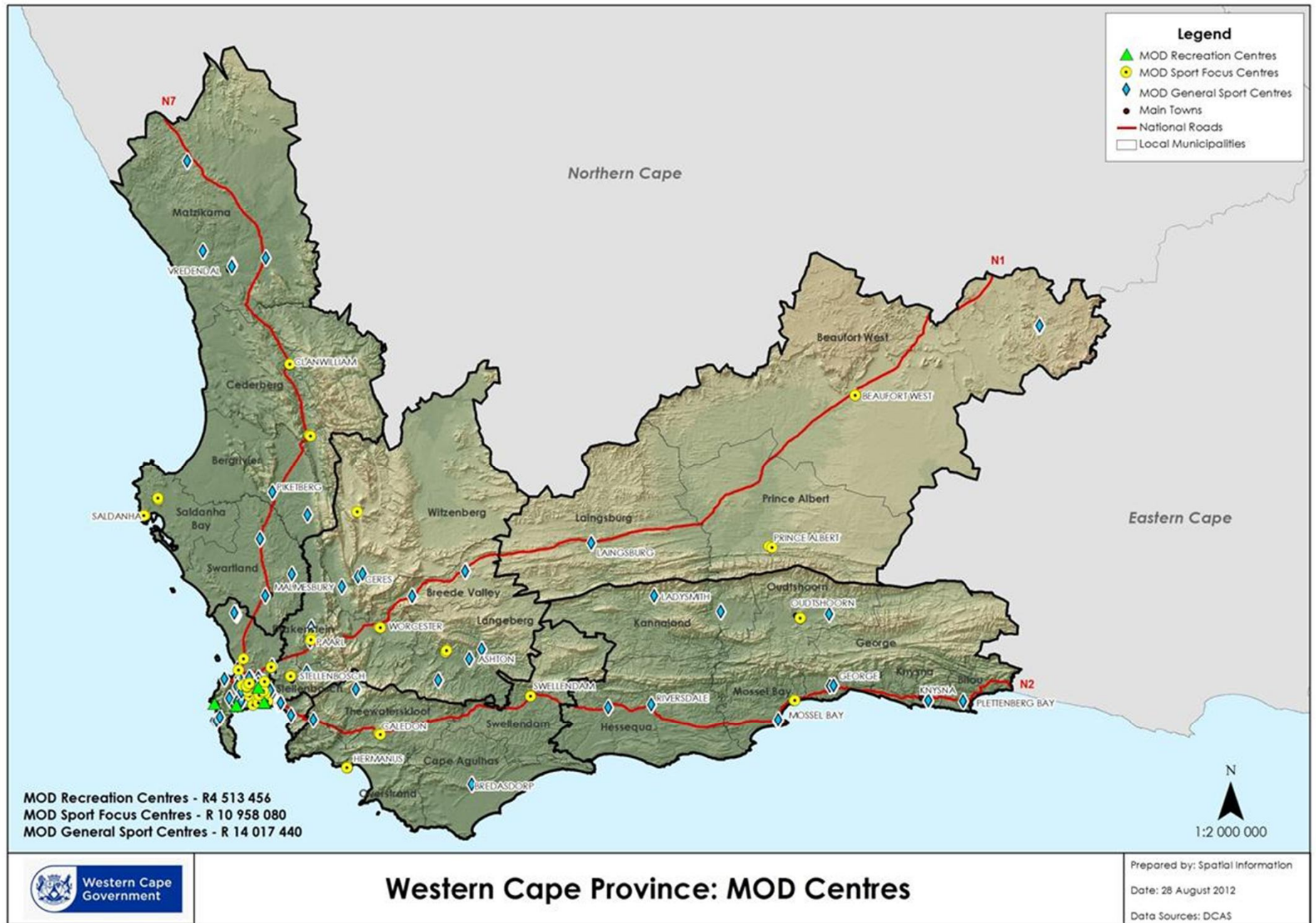
Investment in Sport & Recreation



MOD Centre Investment

MOD Centre Investment







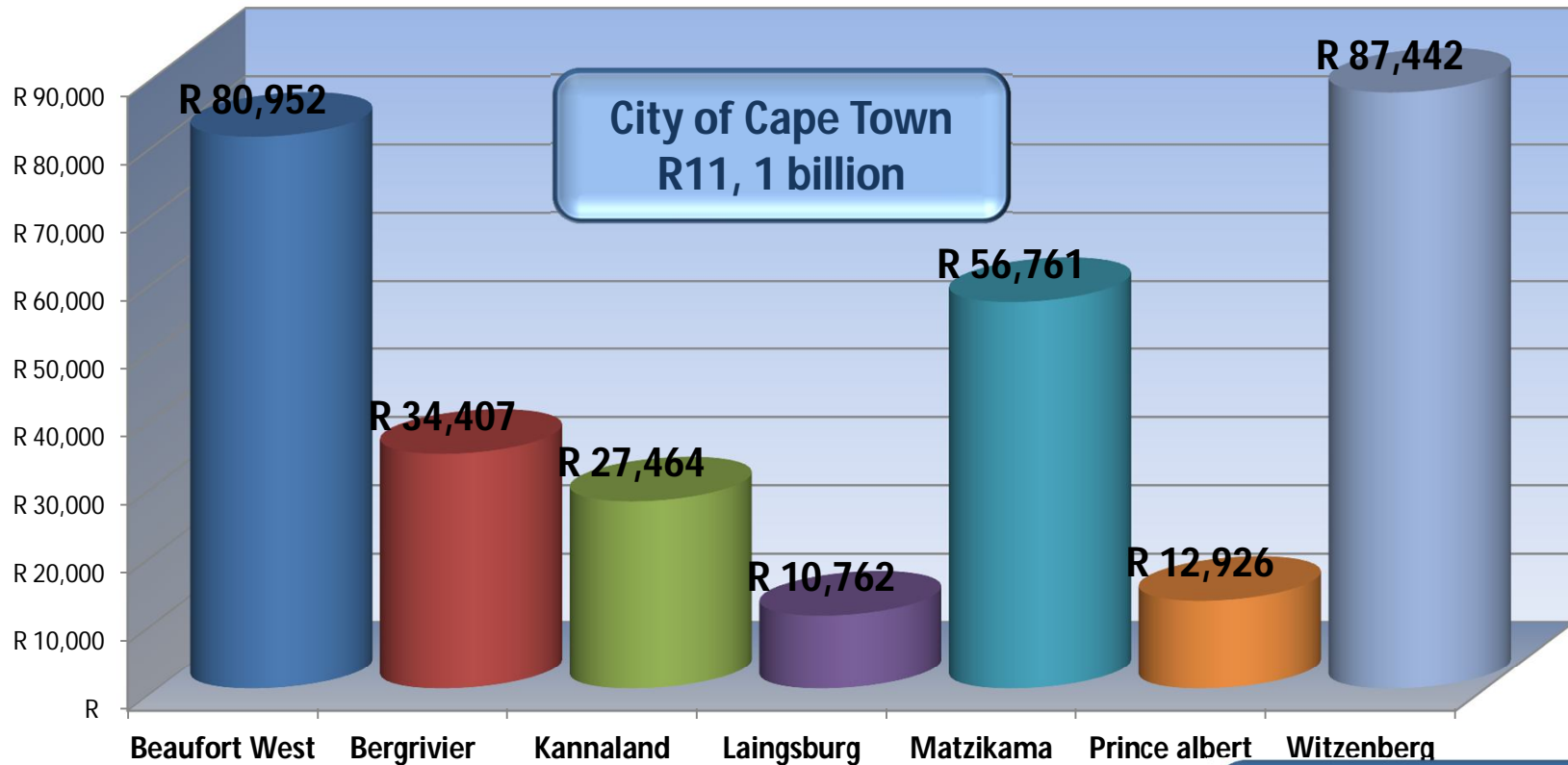
Western Cape Government

Department of the Premier

Health

Health expenditure in areas of multiple deprivation

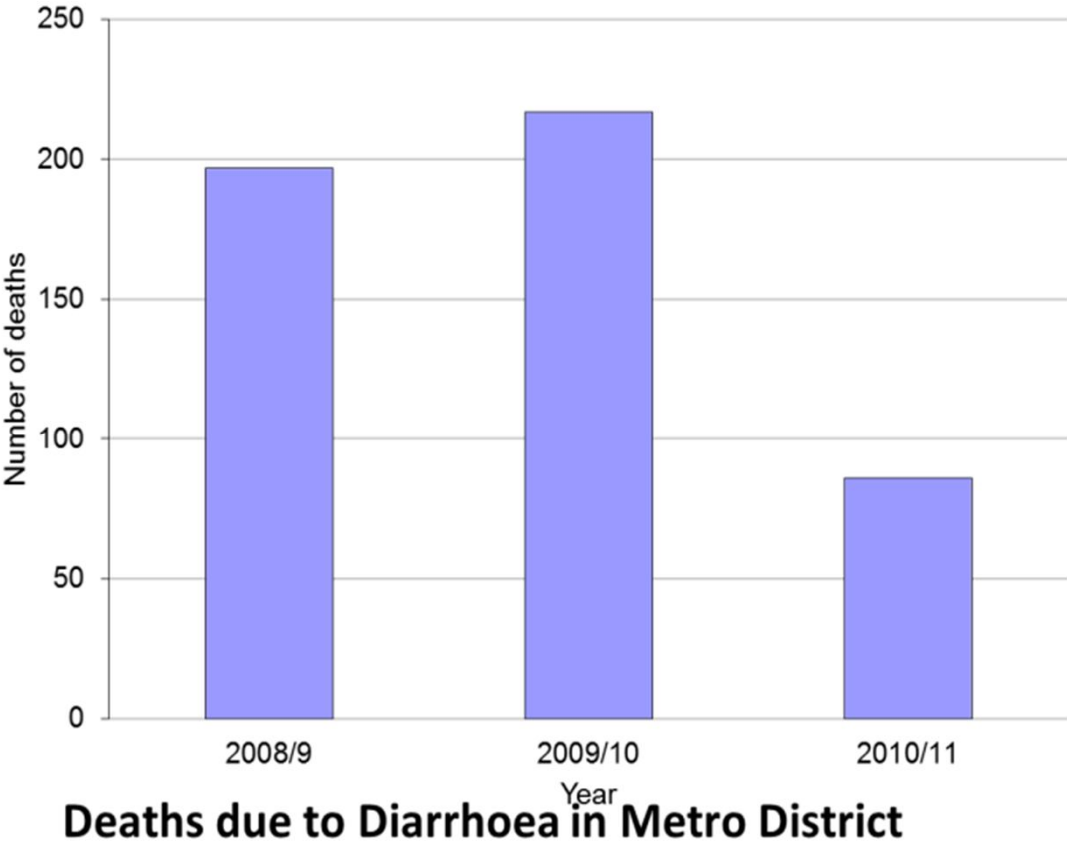
Health Municipal Infrastructure Investment
2012/13



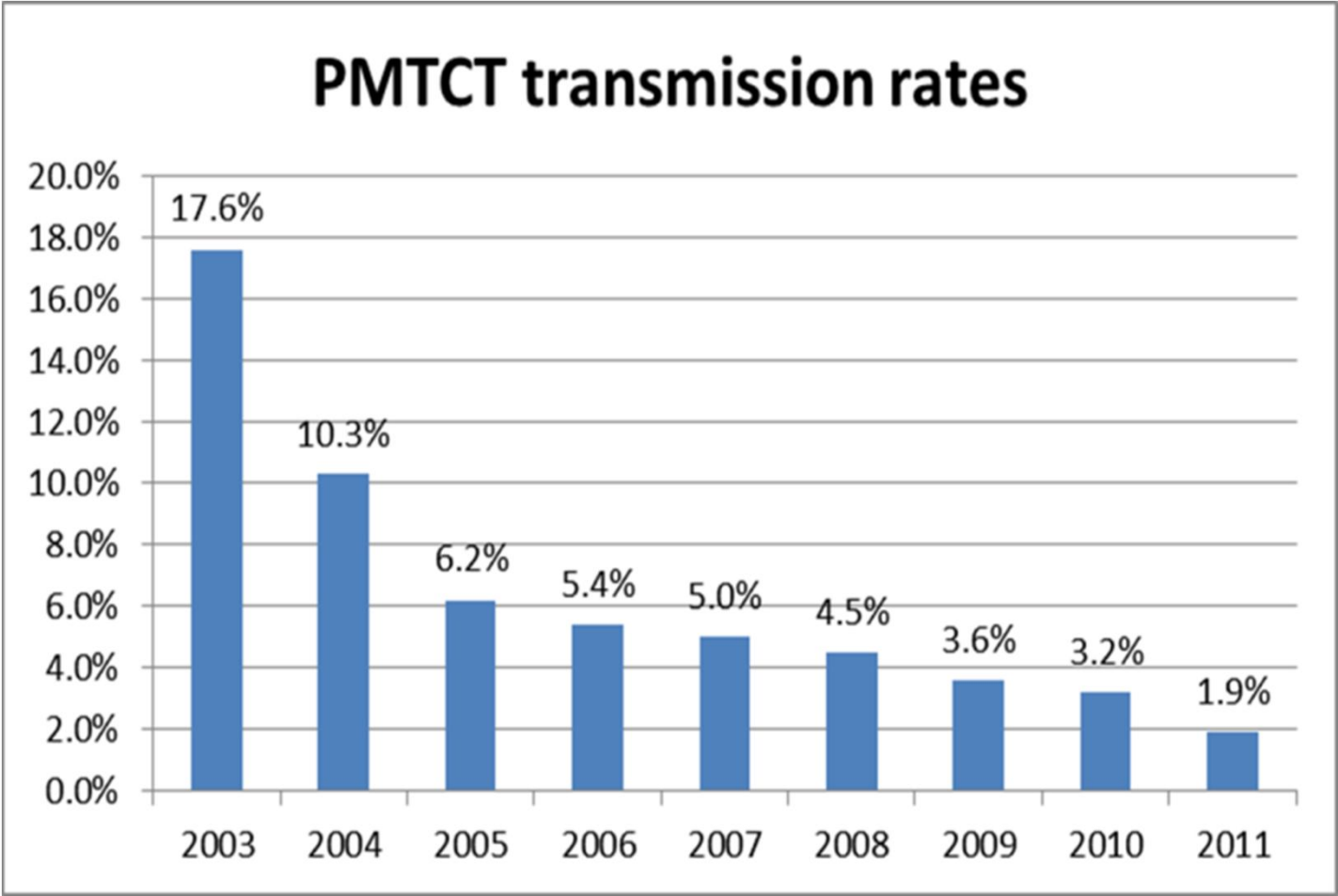
78% of Western Cape Budget

R11,4 billion

Deaths due to Diarrhoea: Metro



Mother to Child Transmission Rates



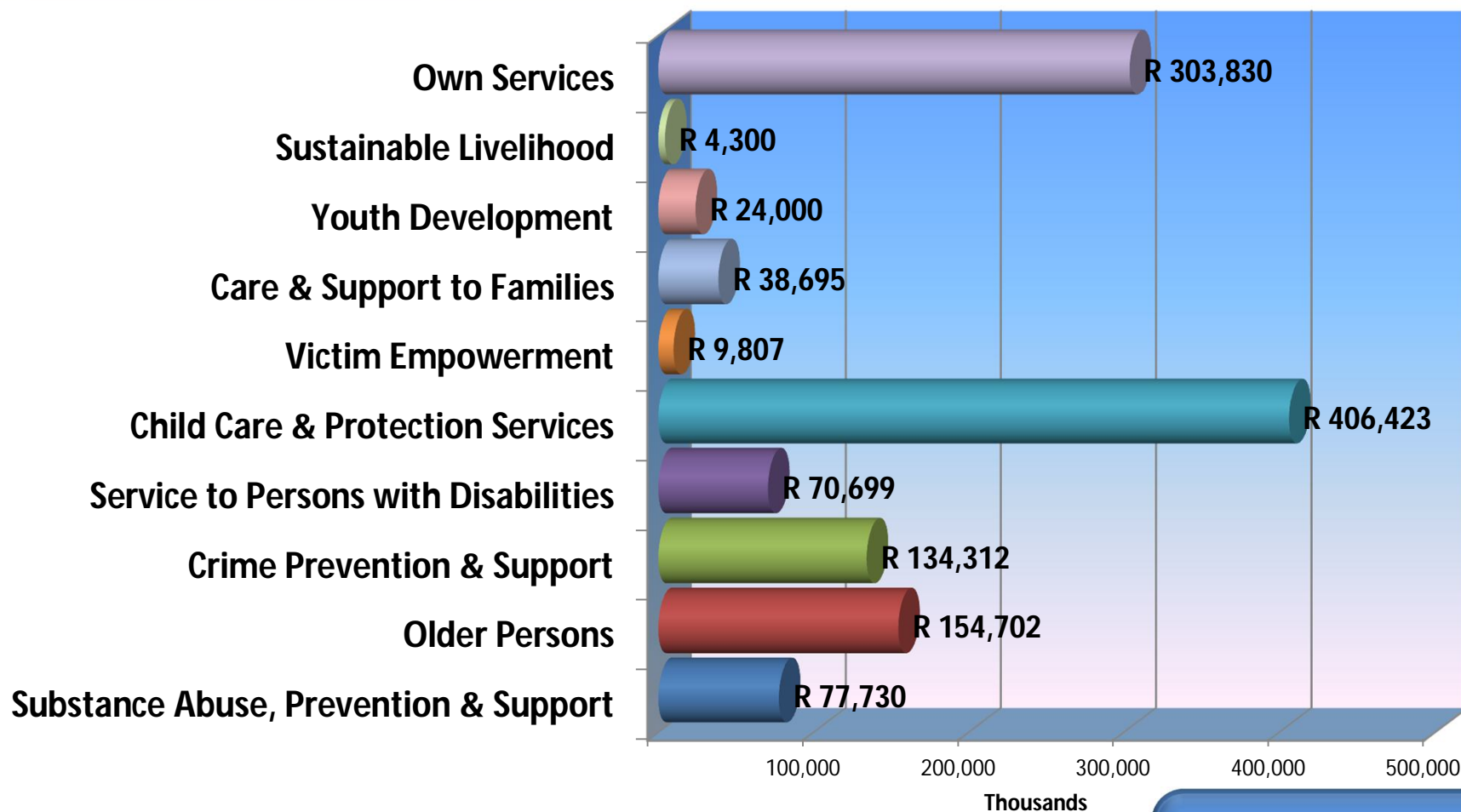


**Western Cape
Government**

Department of the Premier

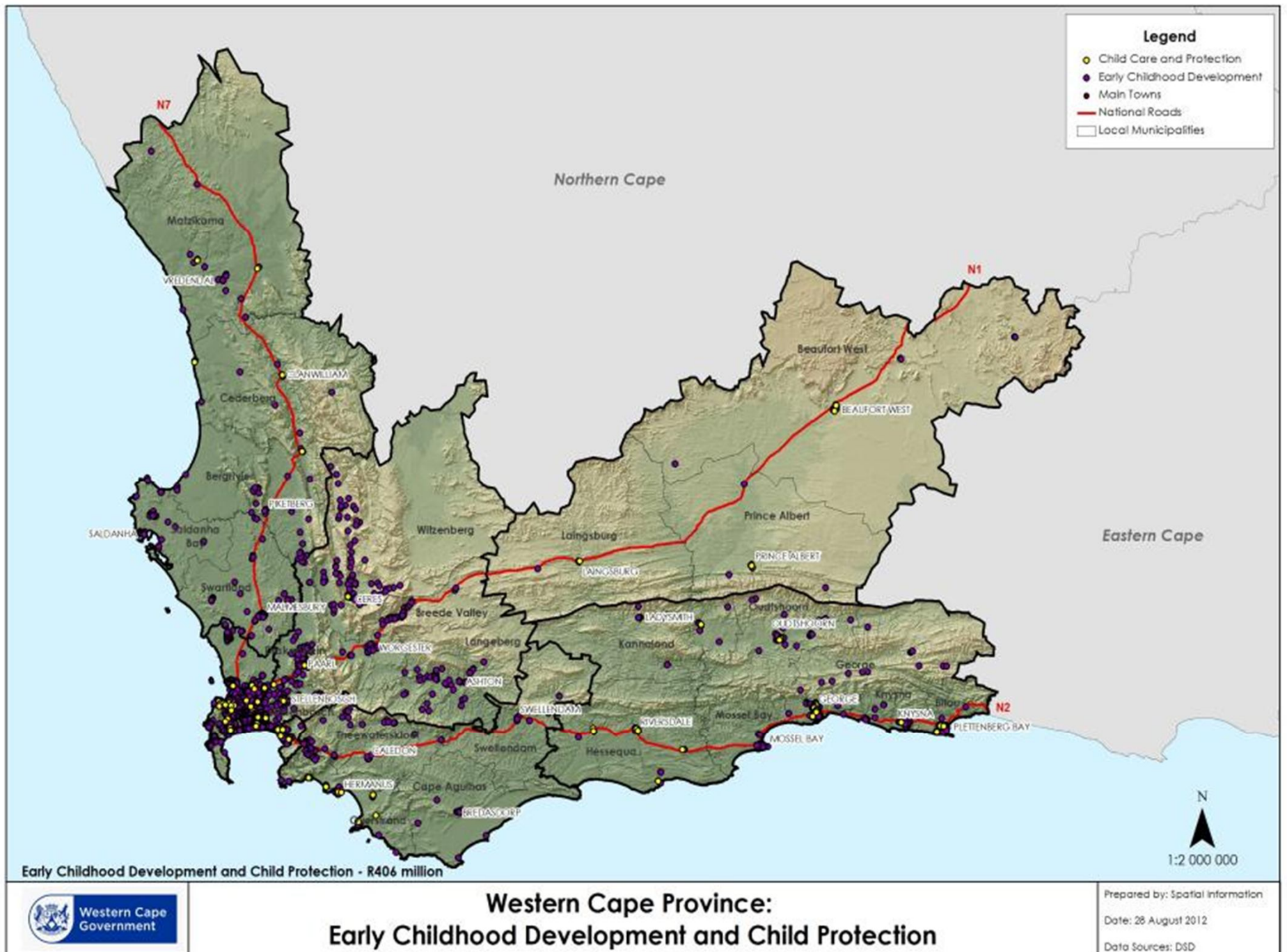
Social Development

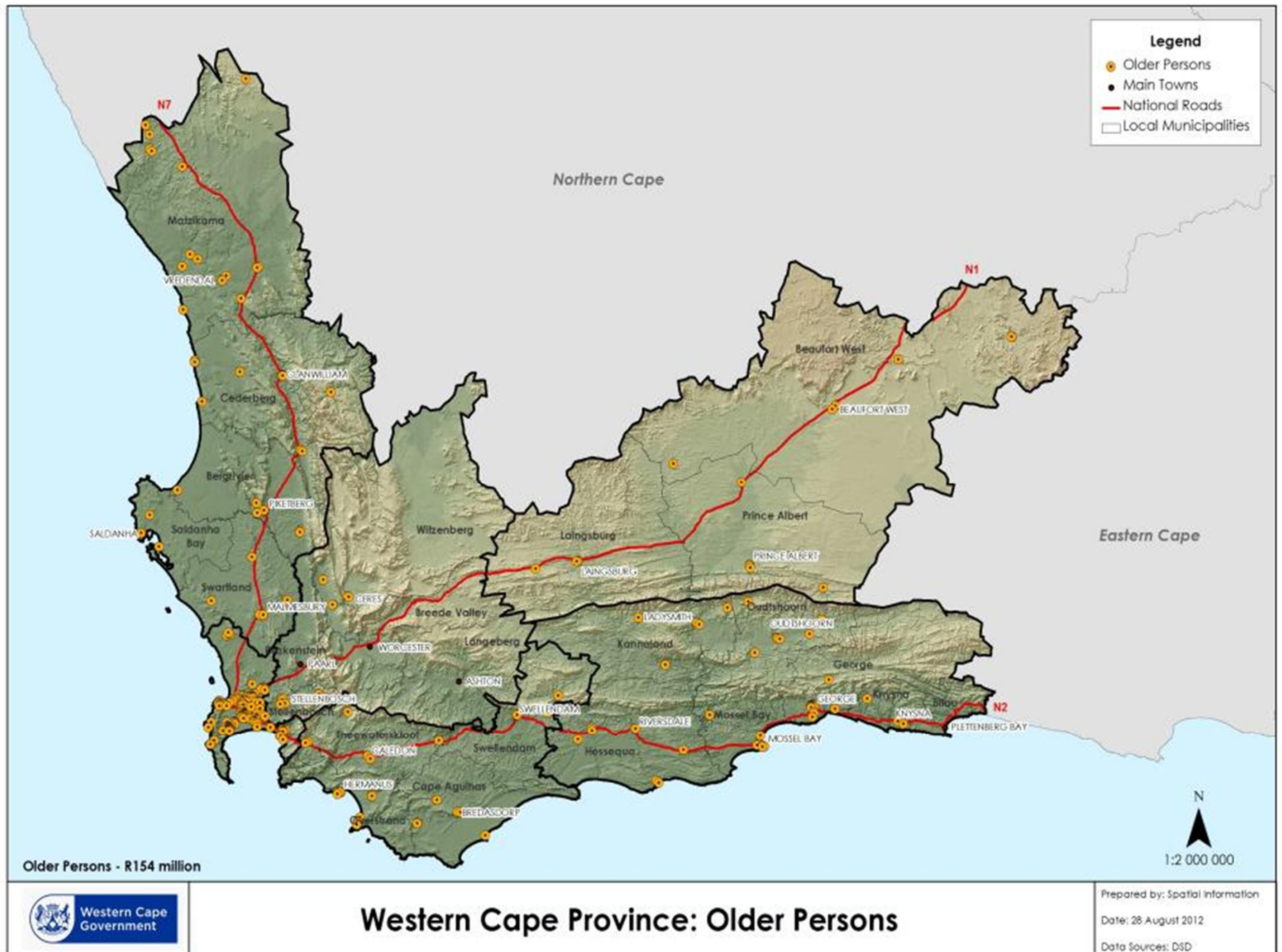
Social Development Investment



87% of available budget

R1,2 billion







**Western Cape
Government**

Department of the Premier

Human Settlements

Western Cape Housing Overview

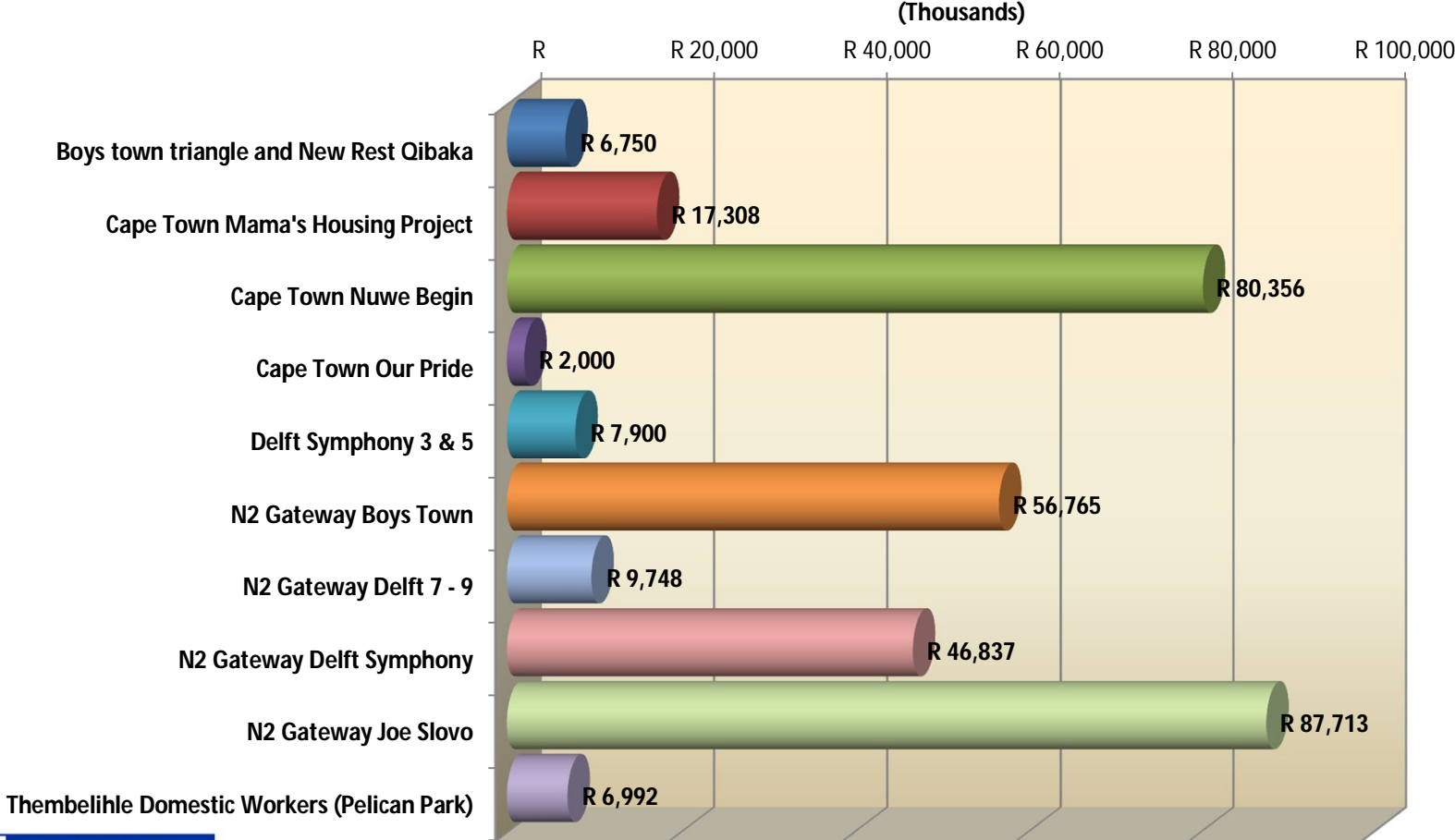
| Municipalities | Sites | Units | Others | Cashflow Projection |
|----------------------------|--------------|---------------|--------------|------------------------|
| CoCT | USDG | 5 904 | 1629 | R 678 369 000 |
| Provincial Projects | 1 460 | 4 097 | | R 299 721 000 |
| Other Municipal Projects | 8231 | 5052 | 1663 | R 561 660 000 |
| Other | | | | |
| Individual Subsidies (500) | | | | |
| EEDBS | | | | R 185 430 000 |
| NHBRC | | | | |
| OPSCAP | | | | |
| Total | 9 691 | 15 053 | 3 292 | R 1 725 180 000 |

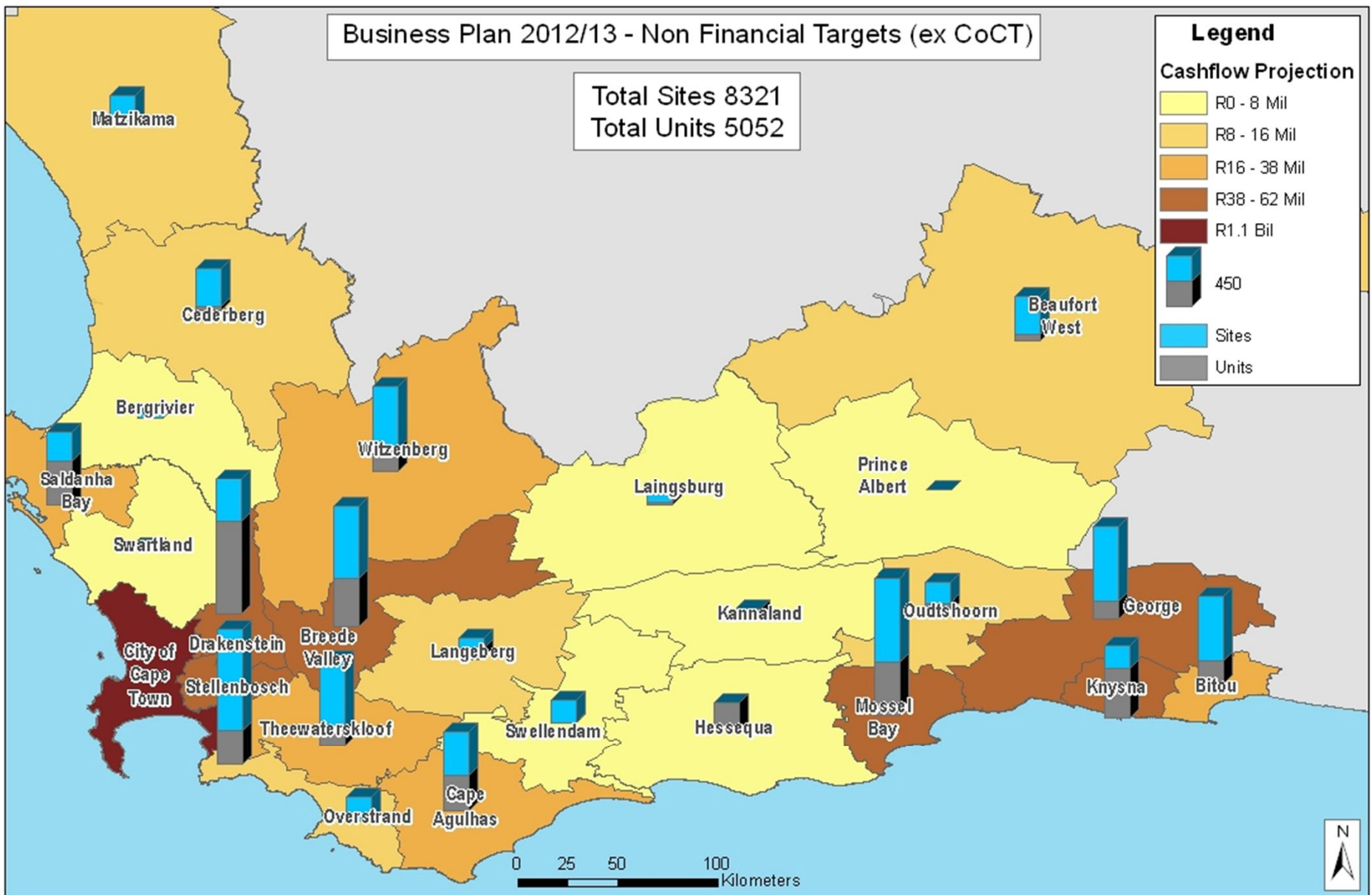
90% of available budget

R1,7 billion

Provincial Housing Investment in Metro

Provincial Housing Projects in Cape Town Metro





Department of Human Settlements Projects outside Metro



Western Cape Government

Department of the Premier

Walk the talk

Bids Awarded

| 2009 | | 2011 | |
|----------------------|---------|----------------------|---------|
| Total Bids (million) | to HDIs | Total Bids (million) | to HDIs |
| R 886 | 40% | R 776 | 89% |

